



**SCHWALM**  
KANALSANIERUNG



Scan the QR code to see  
our whole **RANGE OF SERVICES**



SERVICES

## SEWER CLEANING



### High-pressure rinsing and suction

- House connection cleaning
- Periodic maintenance cleaning
- Basic cleaning for preparation for TV inspections
- Execution by trained, skilled personnel

Use of rinsing and suction vehicles with continual water treatment

### Contact

Willi Schwalm  
Inh.: Martin Schwalm e. K.  
Schulstraße 10  
36251 Bad Hersfeld  
Germany

Phone: +49 6621 14389

E-mail:  
[info@schwalm-kanalsanierung.de](mailto:info@schwalm-kanalsanierung.de)

Website:  
[www.schwalm-kanalsanierung.de](http://www.schwalm-kanalsanierung.de)

## PARTIAL SEWER REHABILITATION



### Professional installation of short liners in:

- Main pipe from DN 100 to 800
- House connection pipes

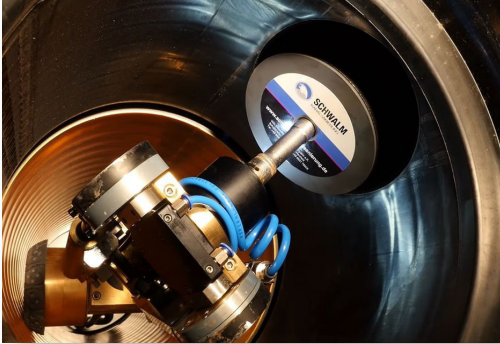
### Professional installation of hat profiles in:

- Main pipe from DN 100 bis DN 800
- Lateral Connection from DN 90 bis DN 250
- House connection lines

### Using special machines:

- Fully equipped, autarchic sewer rehab vehicles
- Sewer rehab robots: Talpa FSR 1330 and Talpa FSR 2060
- HutlinerPacker® (*Lateral Connection Packer*) from DN 100 to DN 800
- Execution by trained, skilled personnel

## COMPRESSION PLUG SYSTEM



For tight sealing of faulty connections and blind connections

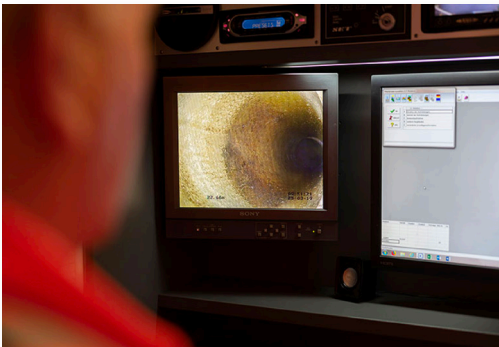
### Line formats:

- Main pipe: DN 200 - DN 800
- Connecting pipe: DN 100 - DN 200

### Installation and disassembly:

- Sewer rehab Talpa FSR 1330
- Sewer rehab Talpa FSR 2060
- Manual assembly in accessible sewers
- Function: Expansion plugs
- Execution by trained, skilled personnel

## TV INSPECTION, WATERTIGHTNESS TESTING, BUILDING REHABILITATION



### TV inspection

- Status report
- Warranty acceptance
- New build acceptance
- Property inspection
- Deformation measurement
- Documentation and digital recording in accordance with DIN EN 13508-2 / M 149-2
- Execution by trained, skilled personnel

### Watertightness testing

- Of pipe connections
- Of connections
- Of pipes, lines
- Of shafts
- Execution by trained, skilled personnel

Process according to DIN EN 1610 and DWA-A-139

## EMPTYING WASTE WATER COLLECTION CONTAINERS



### Cisterns

- Domestic water and rain water

### Ditches

- Conventional and biological waste water treatment plants

### Fat separators

- Gastronomy, Commercial kitchens, Industrial companies
- Execution by trained, skilled personnel